

# SOUTH DAKOTA SYNODICAL

# Women of the ELCA

VOLUME XXXI NUMBER 1

February 2012



## PRESIDENT Vivian Westgard

I started working on my taxes and cleaned my closet, all because I had this article due. But here goes.

I returned recently from our winter Board meeting in Pierre. We had perfect attendance and good weather. What more could we ask? Praise the Lord!

In February, I will be going to Chicago to meet with the Conference of Presidents and the Church-wide staff. If you have any concerns or questions, please let me know and I will try my best to share them with this group.

On February 26, we celebrate “Bold Women’s Day.” There is good article in the January-February issue of our Gather magazine, which talks about bold women, “A Different Kind of Bold” by Linda Post Bushkofsky (page 49).

Our seven South Dakota Conferences will each be hosting a Spring Gathering in April. Be sure to mark it on your calendar and attend your Conference gathering.

In 2012, we, the Women of the ELCA, will celebrate our 25<sup>th</sup> anniversary. Plans are being made to celebrate during our convention in June. We will meet in Pierre, June 15-16. Watch for more information and registration in April.

As you know, we made a commitment of \$200,000 to Lutherans Outdoors in SD to help fund the kitchen at Joy Ranch. We have now raised \$176,352.33. With \$23,647.67 left, the Board thought it would be fun to fulfill this commitment during our anniversary year.

We plan to have a Synodical-wide Bake Sale on Sunday, May 6. Let’s all get behind this and meet our goal. If you have ideas that will help make this happen, please let me know.



Have you heard about “The Big Read?” Congregations of the SD Synod are encouraged by our Bishop, David Zellmer, to get involved in reading the book Fearless by Max Lucado.

In 2 Timothy 1:7, Paul writes, “. . . for God did not give us a spirit of fear, but a spirit of power and love and self-control.” We are invited to join with other members and congregations as we imagine our lives without fear, as we read and discuss this book together.

Thank you for your continuing support and prayers. If I can be of any help, please contact me. My email: [vivigard@midco.net](mailto:vivigard@midco.net). My phone: 605-882-5733.

## SPRING CONFERENCE DATES AND PLACES

Prairie Rivers: April 14 at First Luth., Mitchell 8:45  
Southeastern: April 14 at Spring Valley, Viborg 9:00  
Medary: April 21 at St. Paul’s, Clear Lake at 9 AM  
Prairie Coteau: April 21 at St. Paul, Clark at 9 AM  
Crossroads: April 28 at Holy Cross, Sioux Falls 9:00  
Northern Plains: April 28 at Bethlehem, Aberdeen 9  
Bear Butte: April 28 at Our Saviors, Spearfish 9:30  
Plan to attend your Conference meeting. Meet and greet old friends. Help make local policies and attend Bible Study.



## VICE-PRESIDENT ERIKA LEHMANN

Dear Sisters in Christ,

Have you heard about the ELCA Malaria Campaign? Living in South Dakota, most of us don't think about malaria unless we are travelling to the tropics or have loved ones spending time in a place where the conditions are right for the disease that infects an estimated 200 million to 300 million people a year, with 2 million to 3 million deaths. Malaria has been around since ancient times, contributing to the high rate of infant mortality and the short life expectancy in mosquito-prone areas. So, why are so many people suddenly focused on eliminating the disease now? According to Jessica Nipp, on the ELCA website, "We're living in a 'global moment.' For the next four (now three!) years, the ELCA is joining hands with other churches, government agencies, non-profit agencies, celebrities and—very importantly—*researchers* in our quest to overcome malaria by 2015."

Why should we as members of the Women of the ELCA in South Dakota be involved in fighting a disease we are very unlikely to get ourselves? For the same reason that we respond to the call to help hurting people in our own communities or anywhere in the world. It is what Jesus exhorts his followers to do. Feed the hungry, give a drink to those who thirst, welcome the stranger, clothe the naked, visit the sick and those in prison were the ways that Jesus explained in the parable of the Last Judgment that people can live out their love for him. In this time of global connections, we have a much broader reach than people did in Bible times, but as the parable of the Good Samaritan has always made clear, neighbors are people who respond to people in need, whatever their nationality. We love and follow Jesus, so we do what he asks of us: we obey the call to help where and when we can. This is the moment for conquering malaria and we have been activated into the campaign.

There is no successful malaria vaccine yet, but progress is being made on that front, and in the meanwhile, efforts to increase the use of life-saving

bednets and other ways to protect the most vulnerable people, such as babies, young children, the elderly and those with poor immune systems are being undertaken. There have been medications for many years, but the disease is becoming resistant to them, so new drugs need to be developed. Together with our partners, we are on the verge of an historic breakthrough that will ease the great suffering that malaria brings to our brothers and sisters. Without the curse of malaria, the global workforce will be healthier and better able to provide for their families, and much better able to plan for the future. Although poor people are more likely to die of malaria than people with access to adequate food and medical care, it is also true that malaria causes people to be poorer, since illness makes it harder for people to do demanding work.

As you consider how your unit can raise awareness and funds for the ELCA Malaria Campaign, remember that you do not need to work alone. What about a project with your church's Sunday School children, or your confirmation students, or the whole congregation? Maybe your church has parish nurses who would like to be involved in educating people about malaria. Set a goal and make a fun poster that marks your progress to increase interest. Go to the [elca.org/malaria](http://elca.org/malaria) website and find lots of good ideas. The ELCA has committed to a goal of \$5 million a year for three years in addition to maintaining our financial commitments to the work of ELCA World Hunger. Keep in mind that \$10 will buy a bednet that can save the lives of all who sleep under it and \$2 can buy a dose of medicine to save the life of a person who already has malaria. Call or e-mail if you you have a great idea to share or any questions that I could help you find an answer to. We are working to get a Malaria Task Force together in the synod. If you have an interest in that, please contact me!

In Christ's love and service,  
Erika Lehmann, [lehmann@sio.midco.net](mailto:lehmann@sio.midco.net) or 605  
359-4902 (cell phone)

# HAPPY 25TH ANNIVERSARY, WOMEN OF THE ELCA



## SECRETARY KATHY HEFFERNAN

I was having several days of writer's block with my contribution to the Synodical newsletter. As the days were chipping away toward the deadline, I finally asked God to inspire me in a direction maybe other than the one I had been working. As I lay in bed this poem came to mind. This is a wonderful, powerful, inspiring poem that hangs in my home where I see it all the time. I've sent this to my daughter, as encouragement, when she encounters the struggles and challenges as an intern pastor.

My wish is that all of you will be encouraged by this poem when you encounter the challenges in your life.

Looking forward to Lent,

### The Knots Prayer

Dear God,

Please untie the knots that are in my mind,  
my heart and my life.

Remove the have nots, the can nots and the  
do nots that I have in my mind.

Erase the will nots, may nots, and might nots  
that find a home in my heart.

Release me from the could nots, would nots,  
and should nots that obstruct my life.

And most of all, dear God,

I ask that you remove from my mind, my  
heart, and my life all the am nots that I have  
allowed to hold me back, especially the  
thought that I am not good enough.

Amen

- author known by God -



## MISSION COMMUNITY MARY HILDEBRANDT

What a wonderful winter we have had so far, but looking outside today looks like winter is here. Hopefully, it won't last very long. The aim of Mission Community is to enable each woman to value herself and others created in the image of God to build up and celebrate relationships. Visit the homebound members so that they feel part of the community. Also consider the needs of younger women in the church. Ask if there is something we can do to support them. Remember to pray for all who are having difficult times. A smile goes a long way. Upcoming events to watch for are Bold Womens Day and World Day of Prayer. What a wonderful opportunity we have to do these things. Looking forward to seeing you at spring gathering coming up.  
Mary Hildebrandt

## WHEN THE NOMINATING COMMITTEE CALLS!!!

The Synodical Nominating Committee is charged with putting together a slate of candidates for the ballot that will be voted on at our Synodical Convention in Pierre, June 15-16, 2012. The positions that are open without incumbants willing to run again are for the secretary and two for the nominating committee. Both members at large, Vicki Persson and Lucille Birkholtz and Vice President, Erika Lehmann are willing to continue in office. The secretary should be comfortable with technology as there is quite a bit of computer work and photocopying. Current members of the nominating committee are Darlene Jervik of Hudson, Janet Mattison of Spearfish; Donna Bieber of Java and Else Englund of Elk Point. If you get a call from one of them, please prayerfully consider having your name on the ballot, or if you have suggestions, please contact me or one of the nominating committee. Thank you! Erika Lehmann

## DAILY BIBLE READING COME TO YOU

These are some of the internet WELCA sites where you can subscribe to daily bible readings sent to you.

[http://www.elca.org/What-We-Believe/The-Bible/](http://www.elca.org/What-We-Believe/The-Bible/Todays-Bible-Reading.aspx)

[Todays-Bible-Reading.aspx](http://feeds.elca.org/rss/wdg/)

<http://feeds.elca.org/rss/wdg/>

<http://feeds.elca.org/rss/dbr/>

<http://feeds.elca.org/rss/dbv/>



**TREASURER**  
**DARLENE BRESSON**

## Women of Faith and Climate Change

One of the Memorials presented at the Triennial Convention last summer dealt with climate change. Global warming has been a highly controversial topic since it was first reported in the 1970s because climate is so complex and variable. “If you don’t like the weather in South Dakota, wait 5 minutes.” Although we still hear skeptics, especially following a hard winter like last year, global warming – climate change – is indisputably occurring faster than it has in millions of years, and this increasing warmth is caused by human activity.

The sun warms the earth, as it warms our skin when we feel its rays on our face. The earth absorbs some of this warmth, but radiates off a lot of the energy. However, due to the proliferation of greenhouse gases – carbon dioxide, methane, nitrous oxide and fluorinated gases – the natural release of this excess warmth is being blocked, resulting in a gradual increase in the temperature of the earth. Carbon dioxide (CO<sub>2</sub>), one of the largest components of greenhouse gases, comes from the burning of fossil fuels and is released when we drive our gas-powered vehicle, use electricity from coal- or gas-fired power plants, or heat our homes with oil or natural gas.

Coal-burning power plants contribute the most CO<sub>2</sub> in the US, but automobiles are the second largest contributor to the United States’ total carbon dioxide emission. America contributes 25% of the world’s carbon dioxide emission, but we have only 4% of the earth’s population. The amount of carbon dioxide our vehicle emits is comparable to throwing a pound of garbage out the window for every mile we drive.

Because of the complexity of the climate, no one knows for sure what will happen to earth’s fragile environment, but some things are already evident. The world’s governments created a panel of thousands of climate experts and officials in 2001, the Intergovernmental Panel on Climate Change (IPCC), to provide the most reliable advice. In a 2007 report by the IPCC, they confirmed that the intensity and extent of droughts have increased in the past 4 decades, “particularly in the tropics and sub-tropics.” The report also confirmed that the Arctic ice area has shrunk by about 2.7% per decade since 1978 and the “average Arctic temperatures increased at almost twice the global average rate of the past 100 years.” As the earth’s temperature rises, it will impact the availability of

food and clean water, especially in many countries in Africa and Latin America, where food is already scarce.

According to information contained in the Triennial Memorial, the World Watch Report *Global Climate Change: The Threat to Human Health*, 2009 (<http://www.worldwatch.org/system/files/181ExecSummary.pdf>) states that between 250 million and 1 billion *additional* people will be displaced by climate change alone between now and 2050. In addition, environmental-related illnesses will proliferate, increasing the number of children killed by disease. Finally, the famines and water shortages caused by climate change will affect the poor the most – 70% of whom are women. Climate change will have the most impact on people living in poverty (in the US and abroad) and those who are dependent on their natural environment for their day-to-day survival.

So what can we do? We can continue to educate ourselves on this very alarming problem. With God’s guidance, we can encourage our State and National elected officials to pass meaningful legislation to reduce greenhouse gas emissions. And, we can encourage and support the creation of renewable energy sources.

For additional information on this topic, please see the following websites:

IPCC, “Climate Change 2007: The Physical Science Basis, Summary for Policymakers” (February 2007), and IPCC, “Climate Change 2007: Impacts, Adaptation and Vulnerability, Summary for Policymakers” (April 2007) (available for download at <http://www.ipcc.ch/>)

Pew Center on Global Climate Change, “Climate Change 101” ([www.pewclimate.org](http://www.pewclimate.org))

Union of Concerned Scientists, “Frequently Asked Questions About Global Warming” ([www.ucsusa.org](http://www.ucsusa.org))

\* ELCA Fact Sheet on Climate Change: <http://www.elca.org/ELCA/Search.aspx?q=climate%20change>  
Environmental Protection Agency: <http://www.epa.gov/climatechange/>

American Institute of Physics: <http://www.aip.org/history/climate/co2.htm>

A few items of interest from the Synodical Board meeting held in January:

- We are planning to visit sites of interest around Pierre on the Thursday before the Synodical Convention. Participation on Thursday will be voluntary and any fees for transportation, admission, etc. will be passed on at cost. Pre-registration will be required, so arrangements can be made.
- The Synodical Board requests that each Unit in South Dakota contribute an item for the silent auction, with a value of at least \$10. The proceeds will be split between Lutheran Campus Ministries and the Malaria campaign.
- Because the Board feels it’s important that any woman who wishes to attend the Synodical Convention has that opportunity, we encourage Units to consider paying part of the registration fee.



## MISSION ACTION DEE SANDERSON

Mark 12:38-44. The widow gave sacrificially – what does this mean to us?

What is your group doing to **celebrate 25 years of Women of the ELCA**? One goal for the Synodical Women of the E.L.C.A. is to complete the pledge of \$200,000 for the kitchen at Joy Ranch. We are very close. We have \$23,647.67 left to complete this commitment. At the January Presidents meeting in Pierre, it was decided that we would do a Synodical Bake Sale on May 6. Every church women's group would have a bake sale that day and sent the proceeds into the Joy Ranch Kitchen fund to help pay the remaining commitment.

**Prayer shawls and prayer quilts.** What is your unit doing in this area? Do you want guidelines and instructions? Let me know and I can get information for you. The synod is requesting prayer shawls/quilts and baptismal quilts be brought to the 2012 assembly in March for redistribution within the SD Synod.

A reminder: The **Lutheran World Relief kits** for 2012 have some changes and LWR will really appreciate your cooperation in filling the kits as requested. ALSO, please remember the LWR book forgot to list the 2-1/2" eraser in the list of school kit requirements – so **DO INCLUDE** the eraser in the school kits. Also, the guidelines ask for a "filler" in each quilt that is made. So even if you think it is a heavy quilt, please include a middle layer so it will be nice and warm for the recipient. Even the desert is cold at night. I know; I am in the Arizona desert as I write this and it has been near freezing temperatures most nights in January. Quilt batting is available from Oklee Quilting, Oklee, MN, 800-777-7403 or [www.okleequilting.com](http://www.okleequilting.com). Today, there is a roll 60" wide by 60 yds. for \$78.60 and 96" x 25 yds. for \$61.00. If you have other good sources for batting, please let me know and I will pass on the information through this newsletter.

**Mission Action reports** are due to your Conference Mission Action chair **NOW**. Due date was January 31, 2012. Call me if you have any questions on the form. We can adapt the form for our needs, but I will need to know what your questions are. Thanks for all your good work. This is a fun job!!  
Dee Sanderson, 605-228-2567 or 605-226-2069, or [deesand@aol.com](mailto:deesand@aol.com).



## MISSION GROWTH ARDITH MCFARLAND

Hasn't this been a January to remember? We hit 60 degrees today. The trees and shrubs are showing signs of budding and that is not good.

I suppose everyone has all their Christmas decorations stored away by now. I still have my nativity scene on the mantle above the fireplace. I'm not in a hurry to put it away as I can truly enjoy my gift from God now that the business of preparing for the season is over. But soon it will be time to put up the cross and begin the Lenten season. On the [womenoftheelca.org](http://womenoftheelca.org) website there are programs resources. "Looking into the Mirror," a Lenten Reflection, is one of them. This resource invites you to use the Lenten season to refocus your faith life and realign your relationship with God. Sister Joan Chittister has said that "souls die from lack of reflection". Lent is a good time for 40 days of reflection, 40 days of spiritual evaluation—an annual check-up. Maybe journaling your reflections would be helpful. *Lent: Penitence, Pilgrimage, preparation*, a new program resource, will be available for use during Lent 2012. To get the complete resource go to [womenoftheelca.org](http://womenoftheelca.org) and download the free PDF.

In the summer 2012 Bible study, "Along the Way", we'll meet some Biblical travelers, enter in conversation and explore our own journeys of faith. We'll walk with Jacob, who after wrestling a stranger throughout the night, discovers God. We will wonder in the wilderness with people who complain about their aching feet and ask "Are we there yet?" We'll spend time with Jesus' companions and reflect on our faith. The writer, Rev. Julie A. Kanarr is an ELCA pastor from Port Townsend, Washington.

It was great to have such a wonderful turnout for the winter board meeting. Everyone shared their time and talents to plan the synodical convention. May everyone have a very Blessed Easter and I will see you in June at Pierre.

Mission Growth,

Ardith



## MEMBER AT LARGE

Vicki Persson

### Who Are We?

We are a community of women who gather in congregations across South Dakota to grow in faith and live our faith through ministry and action. We support one another through the joys and struggles of life. Together, we are committed to carrying out our purpose and our mission. Our mission is to mobilize women to act boldly on their faith in Jesus Christ.

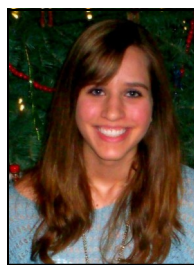
We accomplish our mission by taking action for and promoting women's complete health-emotional, spiritual, and physical. We speak out and take action on behalf of children and families and against commercial sexual exploitation of women and youth. We invite each of you to share your gifts and talents.

Jubilee USA is launching a new campaign to deliver a letter to the White House to expand life-saving debt cancellation and ensure responsible finance for the world's poorest countries. At the Eighth Triennial Convention this past July a resolution was passed asking all of us to work in support of the 1,000 Day Initiative. "Whereas, children who do not have proper nutrition through pregnancy to age 2 can be permanently stunted in those 1000 days, as is true in some African countries where 45% of the children are stunted, and Whereas, crises have led to an increase in hunger and malnutrition placing children, particularly those younger than 2 years of age at special risk for diminished intellectual capacity, impaired immune function, and shorter height, and .....Whereas, globally, women suffer disproportionately from hunger, disease and poverty, especially in developing countries with the low social, economic, and political status of women contributing to high rates of food insecurity and malnutrition, with their almost always being poor access to maternal and child health care, and....Be it resolved, that Women of the ELCA be encouraged to support The 1,000 Days initiative ([www.thousanddays.org](http://www.thousanddays.org)) through its synodical organizations, its congregations, and its individual participants.

U.S. aid is critical to the continued saving of mothers and children. Please, contact your representatives and ask them to place a circle of protection around programs that feed the hungry. To write to congress go to <http://www.bread.org/> and then click

on "Write to Congress" (along the right side). In your daily newspaper you will find the mailing address of your representatives and your senators. They will reply to your letters. We need to stand up for the women and children in our world.

*What good is it, my brothers and sister, if you say you have faith but do not have works? Can faith save you? If a brother or sister is naked and lacks daily food, and one of you says to them, "Go in peace; keep warm and eat your fill", and yet you do not supply their bodily needs, what is the good of that? So faith by itself, if it has no works, is dead. James 2:14-17*



## LUTHERAN CAMPUS MINISTRY

Sophomore, Amanda Lambrechts, will be joining the Peer Minister staff at the South Dakota State University

Lutheran Center for the Spring 2012 semester. She will be serving as the Peer Minister of Development. Amanda is originally from the city of Milbank, SD. She is currently studying in the Dietetics program at SDSU, where she plans to graduate to become a Registered Dietitian. Amanda first became involved at the University Lutheran Center within the first couple weeks of her freshman year of college. Since then, she has participated in many of the ULC activities, including the 2011 Spring Break Mission Trip to Los Angeles. She will also be joining the group this year as they travel to Denver for another Mission Trip over Spring Break. She commented, "The University Lutheran Center has always made me feel at home on campus full of students. I am excited to begin working with Development and continue making connections through the center."

The current Peer Minister of Development, Tiffany Messenbrink, will continue to work until the end of the Spring 2012 semester. She will be joining her fellow Pharmacy classmates in Sioux Falls, SD next fall, to finish her final years of Pharmacy school.

**Amanda Lambrechts**

**South Dakota State University**

Class of 2014

Dietetics Major, Health Science Minor

## GLOBAL HEALTH MINISTRIES

http://www.ghm.org  
7831 Hickory Street NE  
Minneapolis, MN 55432

Some of us who have been watching our calendars noticed that 2012 will mark the 25th Anniversary of Global Health Ministries' incorporation to pursue the mission God has called us to serve and blessed us all in serving. It sounded to us like a good reason to hold a celebration.

There is so much to be grateful for, and so much yet to look forward to. Mark your calendars now for Sunday, May 6th from 2:30 pm to 5:30 pm at Incarnation Lutheran Church in Shoreview, Minnesota. We want to capture and celebrate our history throughout the year, and so we have decided on two projects. The first will be special 25th Anniversary supplements to our published newsletter with stories and photos that acquaint us with special moments from each of five, five-year segments of our 25 years in mission. For this we will invite contributions from all of you. We will also seek out some of you for more in-depth interviews. Secondly, we plan an anniversary video that will capture some of these stories on film, to be screened for the first time at the May 6 event, and be available for everyone as a remembrance of thanksgiving, praise and commitment to God's continuing call to mission.

The May 6th event is planned to begin at 2:30 pm with a social hour and opportunity to view displays from our history. If you have ideas, photos or artifacts from history that you would be willing to lend to this, please contact our resident historian, Scott Lien. At 3:30 pm, a program with special music is planned in Incarnation's comfortable and spacious sanctuary. The anniversary film will be viewed and presentations past, present and future will be shared. A closing worship of thanksgiving will end the program.

Finally, an extra-special dinner is planned for 5:00 pm to conclude the evening program. We hope you will agree that we have much to celebrate and that you will want to be a part of it, because when it comes to celebrating our history in mission, each of you will be our honored guests!

## WOMENS PRISON MINISTRY

Sharon Stark

Dear W/ELCA,

Thank you for your monetary gifts at Christmas. It allowed me to provide treats for the young people at STAR Academy which went to 200 kids. I received a big envelope of thank you cards for treats, quilts and pillowcases. I could not do this ministry without your help so thank you, thank you for your loving support for these kids at risk. They need to know that someone loves them and cares about them when their own family does not. *Mat. 25*

Here is one thank you card from a young girl:

*Thank you, Lutheran Ladies for the apples, oranges and the Wii! Also I would like to thank you bunches for the licorice you have provided that we will receive on New Year's Eve. We appreciate your generosity!*

God loves them and so do we!

Sharon Starks 214-4140 [starks.sharon@hotmail.com](mailto:starks.sharon@hotmail.com)

(Sharon tells me that there is a continuing need for quilts at Star academy.)

### QUILTS ARE NEEDED

**Lutheran World Relief:** Quilts are needed and it is the time of the year to ship them. They prefer a batting inside of the 60" X 80" quilt.

**Pine Ridge Retreat Center:** Contact Karen Rupp at [krn.rpp@gmail.com](mailto:krn.rpp@gmail.com) (Sioux Falls pick-up)

**SD Women's Prison Ministry:** STAR Academy near Custer needs quilts. Contact: Sharon Starks at [Starks.sharon@hotmail.com](mailto:Starks.sharon@hotmail.com) Cell ph: 605-214-4140

**LSS Refuge & Immigration:** Contact them at: 705 East 41st Street, Suite 200, Sioux Falls, SD 57105-6048 ph: 605-357-0100 or 800-568-2401

Email: [info@lsssd.org](mailto:info@lsssd.org)

## Woyatan Lutheran Church

### Pastor David Piper

#### Woyatan Lutheran Church – All Are Welcome

Woyatan Lutheran Church is a multi-cultural mission start in Rapid City, SD with an emphasis on Native American mission and spirituality. In our Christian worship services we honor elements of Native American spirituality that enhances the worship atmosphere for all who are in attendance. We are a place where all people are welcome – people in the local neighborhood, people from the local minimal security federal prison, and people from The Black Hills Workshop community. People of all abilities and from different walks of life have found a home at Woyatan. Over the past year we have celebrated numerous baptisms, but two in particular stood out. Both families were people who claimed that they were Native American Spiritualists and would never have anything to do with Christianity. However, after attending a few Wednesday evening drumming and dancing events held at Woyatan, the Holy Spirit got a hold of them; and they now feel welcomed by Christ. Woyatan is a place where they can identify both with their Native American spirituality and their identity in Christ.

In December, we enjoyed a Christmas celebration that included a Santa who was able to share gifts with ninety local children. We followed that by welcoming the New Year with a pow-wow (the first new year's pow-wow in Rapid City in 25 years) attended by 300 people; this will now be an annual event. Thank you for your prayers and financial contributions that made all of these amazing ministry opportunities a reality.

Recently, we enjoyed our time talking with the great women of Grace Lutheran Church in Sturgis, and are looking forward to meeting more of you in the next couple of months. If you are out in the area and want to learn about Native American spirituality, please give us a call or join us for worship and a meal on Saturdays at 5:30 pm or Sundays at 11:30 am. We hope that many of you will be able to join us this year at Woyatan Lutheran Church in our celebration of the gifts we receive in Christ.

Pilamaya (Thank You) and God Bless,  
Pastor David Piper

## Plan now for World Day of Prayer

This year's World Day of Prayer service theme, "Let Justice Prevail," is inspired by the guiding principles of the World Day of Prayer movement. The women of Malaysia ask us to come together in March as worshipping communities to think about justice and how we may approach it in an interfaith world. "Let Justice Prevail" will be celebrated all over the world on Friday, March 2, 2012.

If you have not participated in World Day of Prayer in the past, seek out services in your area or hold a service in your congregation. Enhance the worship with the many related resources created by the women of Malaysia. In addition to the 2012 worship bulletin, you can order a leader's/planner's guide, Spanish resources, children's service, slides, posters, postcards and music. To order all 2012 materials, call Kutztown Publishing at its toll-free number: 800-523-8211.

(Copyright by WELCA INTERCHANGE, Feb. 2012 issue.)

### CHILI WITH THE BISHOP



Join Bishop Zellmer and members of the South Dakota Synod Staff for homemade chili, engaging bible study, and lively conversation around our new synod vision "That All May Be Fed".

**February 9 - 6:00 PM** Gloria Dei Lutheran, Sioux Falls (5500 E 57th St)

**February 12 - 5:00 PM** Calvary Lutheran, Rapid City (5311 Sheridan Lake Road)

**February 16 - 6:00 PM** Trinity Lutheran, Mitchell (1400 East 2nd Avenue)

**February 28 - 6:00 PM** Bergen Lutheran, Meckling (Timber Road and Bergen Ave)

## LUTHERAN PLANNED GIVING

Kurt Osborne

### As for this house.....

Anna and Peter are generous charitable donors, yet for years they thought about doing something extraordinary. Acting on the advice of their attorney, 10 years ago they took that step by setting up a provision in their revocable living trust to give their house to ministry when the survivor passes away. They were thrilled with their decision and plan.

This was a significant gift Mara and Al wanted to make, yet it did not immediately remove anything of financial value from their estate. It gave them peace of mind that for any reason, they could still fall back on the value of their home, if necessary.

In the past year, Anna's brother left her a substantial inheritance, more than twice the value of their home. Also, a number of their stock decisions have produced winners.

Meeting with the Lutheran Planned Giving / ELCA regional gift planner in reviewing their estate plans, it was suggested that they think about taking advantage of the current tax code by giving the house to charity now and continuing to live in it. Here's the explanation of how it works:

They could deed their personal residence to ELCA Foundation to benefit ministries using a retained life estate agreement. That agreement reserves the right for Anna and Peter to use the property for the rest of their lives, called a life tenancy. Anna and Peter will still be responsible for maintenance and repairs, to maintain insurance coverage and pay property taxes. When the last life tenant dies, the ELCA Foundation takes possession to finalize the gift, sells the property and distributes the proceeds to the ministries Anna and Peter wanted to help sustain their missions.

The regional gift planner explained that the process was straightforward. They would get an appraisal on the property to determine its current market value. Their joint life expectancy and other factors are considered to determine the present value of the remainder interest given to ministry. This amount is the value of the gift that Anna and Peter can claim as an income tax charitable deduction.

The gift planner pointed out that their timing was excellent, as the deduction calculation is very favorable right now. Statistically speaking, even though they are 80 years old and could anticipate living in the house for more than 12 years, the deduction worked out to be a significant portion of the value of the house. For them, it meant a large income tax refund for this year and probably at least two more years. If a retained life estate arrangement sounds like something you would want to investigate, or if you are considering any gift of real estate or appreciated property, your Lutheran Planned Giving regional gift planners, Jim Schade or Kurt Osborne can help. They will provide a personal illustration for you to talk over with your family and advisors.

Jim ([schade@augie.edu](mailto:schade@augie.edu)) & Kurt ([osborne@augie.edu](mailto:osborne@augie.edu)) may be reached by calling 800 653 9520.

### Refugee & Immigration Center's Annual Event To Help New Americans Succeed



## Taste of Cultures Silent Auction & Ethnic Dinner

Join us for an enjoyable evening of entertainment, silent auction and ethnic food. All proceeds help provide basic necessities for refugee families new to our community.

Saturday, March 31, 2012

5:30 to 8:30 p.m.

Multi-Cultural Center

515 North Main Avenue, Sioux Falls

Tickets are \$20 per person or \$150 for a table of eight.

For more information or to order tickets, please contact:

Amy S. Zimbelman, 605-731-2009, [amy.zimbelman@lsssd.org](mailto:amy.zimbelman@lsssd.org)

Pat Reichert, 605-526-6225, [pat.reichert@lsssd.org](mailto:pat.reichert@lsssd.org)

Or call 1-866-242-2447



**Lutheran Social Services**  
Strengthening Individuals, Families and Communities



## TODAY'S DREAM TOMORROW'S REALITY

Margene Thompson

### Racial Justice Advocacy

Making the Reach: a story for thought

Not long ago I said good-bye to my youngest son, Matthew, as he was to begin his freshman year at Berklee College of Music in Boston. For this 17-year-old lover of jazz, the opportunity to study jazz composition was a long-time dream come true. As I watched him walk toward his dorm, long dreadlocks falling in his eyes, I thought of another time, nearly a decade ago, when Matthew had asked me a question that changed my life.

It was early one morning in the midst of packing lunches, brushing teeth, and doing whatever it took to get ready for school and work. Matthew not quite eight, while attempting to stuff a lunch box into an already too-full backpack, looked at me and asked, "Mommy, am I Negro?"

At first I was so stunned by his use of the outdated term *Negro* that I asked him where he had heard the word. Matthew explained that he had seen it written somewhere.

I looked at Matthew with his dark, curly hair and lightly tanned skin, and I knew that he was really asking me a question about his own identity. I explained to Matthew that because his mommy is white and his daddy is African American, he is a mixture of us both. I told him that there was no one else in the world exactly like him, and that because we were created in the image of God, everyone was special. I even reminded him that when he filled out forms at school, in the place marked "race" he had decided to write "human."

But on that day, these answers were not good enough, and Matthew repeated his question: "Mommy, am I Negro?" I explained that everyone on this planet was a mixture of many different colors, and that really we were all part of one human family.

Matthew was patient with me in the way of an almost-eight-year-old, but from the look on his face I could

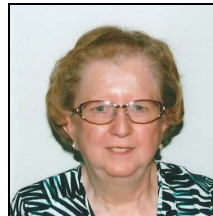
tell there was so much more to his simple yet complex question. Finally, he looked at me and tried once again, hoping this time that his mother would "get it." "Mommy," he said, "if I had been alive during the time of slavery, would I have been one of the people to be treated badly?"

I looked at Matthew with his dark, curly hair and his lightly tanned skin. I looked at my youngest child, flesh from my flesh, heart from my heart. I looked at Matthew whose name means "gift of God," and with a lump in my throat formed from the vessels of my exploding heart, I answered, "Yes."

At 17, Matthew continues to stretch me in many ways. As noted, he traded in his curls for dreadlocks (which he keeps threatening to dye blue). But Matthew, "gift of God," asked me the question that I as a white person in this country had never needed to ask. And even as I waved good-bye, thanking God for this gift that I had been given, I wondered still, "How would people respond to my baby son's dark, curly hair and lightly tanned skin?"

Micah 6:8 ...what does the Lord require of you but to do justice, and to love kindness, and to walk humbly with your God.

Mardella Bieber, Margene Thompson



## MEMBER AT LARGE

Lucille Birkholtz

The South Dakota Synodical Women of the ELCA have a very exciting and busy year ahead in 2012!!!

We will be celebrating the 25th Anniversary of our organization all year long. I encourage you to do something special in your unit and congregation. Do something to make the organization and what it does, known in your church, even coffee and birthday cake served after or before a service would call attention to the silver anniversary.

Feb. 26 is Bold Women's day. Pray for God to lead you to opportunities to do more to make your community a better place to live and to empower women to make a bigger difference.

March 2 is World Day of Prayer...a day to remember and pray for all women as they struggle with poverty, hopelessness, and despair.

There is plenty to be done, let's go do it!!!

## ST. DYSMAS MINISTRY

**REV. MARLIN WANGSNESS**

It has been a rewarding year for the ministry among the men of the SD State Pen. In 2009 our average worship attendance for inmates was 56. Avg. attendance for 2011 was 89! The Lord asks only that the gospel be heard.....and men are responding to that Good News. It really is an inspiring worship service.

2011 also saw St. Dysmas financially operate in the black (just barely) for the second year in a row! Thank you to all of you who have so faithfully promoted the ministry of St. Dysmas in your congregations! Truthfully, we wouldn't be where we are without your support!

Lastly, St. Dysmas along with the ELCA Malaria Campaign, will be the featured ministries at the Synod Assembly in June. Each ministry will receive half of the assembly offering. What is equally exciting is that congregations will be encouraged to bring yarn to the assembly. Imagine...200 boxes and garbage bags of yarn all piled up! It would make quite a sight!

Again, thank you so much for your support and for your continual prayer on behalf of the ministry of St. Dysmas.

In Christ, Pastor Marlin Wangsness

## LUTHERAN SOCIAL SERVICES

**Beth Massa**

### LSS Benefit Events Scheduled

It is time to mark your calendars for the Lutheran Social Services Benefit Events! Spring benefits will be held in five locations across the state:

**Mitchell**, March 25, 1 p.m., Trinity Lutheran Church

**Brookings**, March 31, 6:45 p.m. Volstorff Ballroom at SDSU

**Sioux Falls**, April 15, 1 p.m., Our Savior's Lutheran Church

**Aberdeen**, April 22, 1 p.m., Zion Lutheran Church

**Rapid City**, April 29, 4 p.m. (silent auction) 5 p.m. dinner, Calvary Lutheran Church

Each year, Lutheran Social Services touches approximately 56,000 lives through programs including child-care and preschool, foster care and adoption, mental health counseling, consumer credit counseling, services for at risk youth, school-based mentoring, refugee and immigration, and much more. These vital services wouldn't be possible without your help.

The benefit events are an opportunity for LSS to share the latest information about programs and services. You will have the opportunity to hear from someone who has benefited from an LSS program. Please join us for the benefit in your area and help LSS in its mission to "strengthen individuals, families, and communities." Additional information about the benefit in your area will be coming soon.

## PRISON CONGREGATIONS

**Mary Mortenson**

### A Story from the Streets

Prison congregations offer their members far more than weekly worship and Bible study. Like most of us, the members of prison congregations take evangelism and mission seriously. One of the healthiest outcomes of the PCA model is when men and women find joy and satisfaction in giving and in sharing the Good News. Take the women of St. Francis of Assisi Christian Church in the Utah State Prison in Draper, UT, for example. This little congregation of about 30 women, under the leadership of Rev. Charles Hines, "called" missionaries - volunteers from the outside - to serve the homeless population in Salt Lake City. On December 17<sup>th</sup>, these missionaries handed out almost 200 pairs of socks, along with cards with the John 3:16 passage on one side and, "A message of God's hope and love from your sisters and brothers of St. Francis of Assisi Christian Church at the Utah State Prison," on the other side. One woman, living on the streets, thanked the missionaries for the message of God's love and for the socks. Through her tears, she told them that she had been an inmate at the prison in Draper two years ago. On December 24, when the missionaries reported back to Christ's sisters at the prison, some of them wept because Christ had used them to serve the "least of these", living on the streets.

While this story is unique, stories of service abound, and each time I hear such a story, I am more convinced than ever that the PCA model of prison ministry works – and matters. Please keep me in mind as a speaker at one of your WELCA events or as pulpit supply for a non-communion Sunday service. I promise you a Gospel or otherwise relevant themed message – and probably a little fun, too!

Contact info: PO Box 1132, Mitchell, SD 57301; 800-417-6692; mary@prisoncongregations.org

**ANYONE** can receive a copy of this newsletter by e-mail at no charge. Please send your name and e-mail address to [Lmbirk@itctel.com](mailto:Lmbirk@itctel.com). This will be in PDF format so that you can open it if you have PDF, which I will instruct you in downloading a free copy when I send the newsletter out.

You can also find this newsletter on the internet at: <http://www.sdsynod.org/> At the top of the page, position your cursor on 'Congregations & organizations', then click on WELCA on the drop down menu. When this page comes up, click on the SD Synod WELCA newsletter.

## BREAD FOR THE WORLD



Cathy Brechtelsbauer

**People are hungry and suffering, and we can help them!**

1. The **state legislature** is in progress. We can help lift up the needs of struggling South Dakotans. For examples, here are some good bills. You can help by contacting your state legislators asking for their support.

- Mrs. Daugaard has a new campaign to reduce infant mortality. She tells how prenatal care saves lives. Medicaid coverage for more pregnancies, as in Senate Bill 121, could cost little or nothing to the state budget, if the care results in even a few less bills for infant intensive care.
- Two good ideas deserve support for ending the state's portion of the food tax. House Bill 1216 shifts the tax rates so that food goes to 0% and non-food goes to 4.35%. House Bill 1214 drops the rate on food half-percent-at-a-time in years when state revenue has improved sufficiently over inflation and over previous years. This phases out the food tax over a number of years.
- It's time to end the refund program for the food tax, after its dismal 8-year history. HB 1206 re-directs the program's remaining funds to the state food bank so that it can get more food to people than the refund program does.
- House Bill 1221 raises the minimum wage to \$8, up from \$7.25. This is something the state can do, without costing state revenue, to improve the lives of children. There are parents working at minimum wage. Studies show that modest increases in minimum wage, such as this, do not cause job losses.

There are other bills of concern to the low-income children in our state. Find out more and get up-to-date info by joining the **Advocacy Project email alert network** sponsored by Bread for the World-SD and the board of the Association of Christian Churches of SD, of which the SD ELCA is a member. If you want to participate, let me know (via my email).

2. Thanks for your letters to Congress on hunger. Keep them coming. Good things are happening in the way the US does foreign assistance working with churches on the ground in poor countries and incorporating the principles Bread for the World has been urging. 2012 is **another critical year** to preserve the US assistance that is so important to development of a better world and to our LWR, LWF and other helpful organizations that work with our US State Dept. to get help to "the least of these" in God's world.

3. Last but not least, **look on this list** for your school district. These have at least one school qualifying to have summer lunch in its neighborhood, but not offering it!

*Aberdeen, Agar-Blunt-Onida, Big Stone City, Bison, Bon Homme, Burke, Chamberlain, Colome, Corsica, Faith, Flandreau, Gayville-Volin, Grant-Deuel, Haakon, Hamlin, Harding, Henry, Hill City, Hoven, Huron, Iroquois, Kadoka, Langford, Lead-Deadwoo, Lemmon, Leola, Loneman, Lyman, Mcintosh, Mclaughlin, Oelrichs, Pierre, Rutland, Sisseton, South Central, Shannon, Stickney, Summit, Timber Lake, Todd, Tripp-Delmont, Vermillion, Viborg, Watertown, Waubay, White River, Willow Lake, Wilmot* **And also these Indian schools: Flandreau, Pierre Indian Learning Center, Red Cloud, Sitting Bull School, St Joseph, Takini.**

**What to do?** Call Julie at 605-773-3110 for the info. Then light a fire under people in your area to get a summer lunch started. **Your kids are missing out on available food in the summers!** There is 100% money available and a state office to help.

Cathy Brechtelsbauer, 605-335-6222,  
[ryebread@breadrising.org](mailto:ryebread@breadrising.org), Bread for the World-SD, PO Box 143, Sioux Falls SD 57101

## CHURCH LITERACY

Sally Hillner

The South Dakota Literacy Council will be receiving a grant from the SD Dept. of Labor to hold two tutor training workshops in 2012. If your church and/or another organization to which you belong would like to find a location for us and bring treats we would appreciate it very much. We are searching for a spot in the middle part of the state that has not had a workshop in quite awhile—possibly near Chamberlain, Winner or Mobridge. Our recent referrals have been for students near Aberdeen.

Our oldest tutor in the state has been Shiela Sutton Schmidt of Madison. We mourn her passing on January 26th, at the age of 100! She was noted for her unusually strong relationship with her students. One of her goals was to go beyond teaching reading and writing—to introduce her students to the world around them, especially through travel. The Madison Council was noted for attending conferences all across the state. They would come a day early or stay for an extra day so they could tour our famous faces and places.

Who can be a tutor? You need a degree in caring and a little bit of training. Some of our most effective tutors have been people who had earned their GEDs. Our teaching materials were designed for use by volunteers, and we have several teachers to whom you can turn if you ever need help in meeting a student's special needs. **"If they can't read the words, they can't read The Word."**

My apologies for not returning phone calls in an expeditious manner. This was my vegetarian winter—legs like spaghetti, a mind like Swiss cheese, and plenty of chocolate (as my favorite doc says, "Chocolate is a vegetable; eat your vegetables!") Sally Hillner, 692-5560, Church Literacy Chair

## Celebrate Bold Women's Day this month

Yes, it's February and the 2012 incarnation of Bold Women's Day is scheduled for Sunday, February 26th, but it's not too late to pull together a celebration. Lots of ideas—from simple to elaborate—can be found at [womenoftheelca.org/bwd](http://womenoftheelca.org/bwd). If nothing else, download one of the litanies and use it in your meetings this month or even your personal devotions.

Also at [womenoftheelca.org/bwd](http://womenoftheelca.org/bwd) you'll find a link to "how others celebrate" where you can find several real-life examples of Bold Women's Day celebrations. Destined to be added to that link is what will be happening this month in Windom, Kansas—a town of 130 people that bills itself as the Covered Dish Capital of the World. There the women of Andover Lutheran Church are celebrating Bold Women's Day with a daylong retreat held at an event space in neighboring McPherson. The retreat involves fun, fellowship and relaxation, including a coffee foot soak and a chocolate fountain. Sounds great already! Participants will be using the Women of the ELCA resource *Finding Your Bold* and local women will be recognized for their boldness.

Visit our Facebook page, [facebook.com/WomenoftheELCA](http://facebook.com/WomenoftheELCA), and tell us how you're celebrating.

If you feel it's too late to do something this year, begin thinking now about how you'll celebrate Bold Women's Day in 2013 during our year-long 25<sup>th</sup> anniversary celebration. By starting now, you'll be able to create an extraordinary event in 2013! (Copyright by WELCA INTERCHANGE, Feb. 2012 issue.)

### THANK YOU FROM THE SCHOLARSHIP RECIPIENT

Each year the Synodical Women of SD give an Augustana student the Dina Johnson Scholarship. This year we gave \$800 to Carly Blankenfeld from Trent, South Dakota. We received the following note: (cont.....)

## COMPANION SYNOD

Cathy Larson

A big thank you to those churches and groups who made contributions to the project providing "spring seeds" for Nicaragua. With the fund-raising efforts you made, the spring will be much more hopeful for the farmers who can procure seeds to plant their crops. Funds have also continued to come in to support missionary Mike Busbey in Nicaragua. Thank you to all of you who support him financially and with your prayers and communication.

Cameroon Pastoral Exchange is a new effort we wish to make. A pastor from Cameroon will be invited to come to spend three months in our synod with a pastor here. Hopefully, the conference and the whole synod will be able to have a chance to hear from the visiting pastor. At the end of that time he will return home and the hosting pastor from SD will go to Cameroon to spend an equal amount of time. I urge you to contribute to the costs of travel, medical insurance and stipend for the visiting Cameroonian pastor. This Pastoral Exchange is new and exciting and will bring our churches closer together over time. The funds will be managed by the Companion Synod Committee. Funds can be mailed to the Synod Office designated for Cameroon Pastoral Exchange.

Roof funds are always needed for Cameroon. Fifteen churches have built walls and need roofs in the northern part of the country.

Thank you for your partnership with our companion synods.

(scholarship recipient continued)

Thank you for your generous donation. It is extremely helpful to me. I would not be able to pursue my goal of a future career in nursing without the help of the scholarship. I am a junior and pursuing a double major in nursing and French. Thank you so much!

Sincerely, Carly Blankenfeld



# LUTHERANS OUTDOORS Mara Stillson

## Joy Ranch Leap Day Launch

As we leap into Joy Ranch's inaugural year of programming, make sure to check out [www.losd.org/joy](http://www.losd.org/joy) on Leap Day, February 29<sup>th</sup>. There will be an online party to reveal Joy Ranch's 2012 schedule. Come on—leap back in time to the old west and leap forward to a brand new adventure.

Construction at Joy Ranch is nearing completion and many groups have been experiencing the brand new old west over the past few months. We are especially excited for all of the amazing food that will be cooking up in the "Feed Bunk". Here is a recent photo from the kitchen that the WELCA have raised \$176,000 for.



## BAKE SALE ON MAY 6!!!

All WELCA units are asked to hold a bake sale on May 6 to benefit the Joy Ranch kitchen. We pledged \$200,000 to furnish this kitchen and still need to pay \$23,647 to pay it off. We have done well, \$176,352 has been paid, let's complete this commitment.

The South Dakota Synodical board of the WELCA.



### Summer Theme 2012, God gets it!

Phillipians 4:4-7 ... And the peace of God, which surpasses all understanding, will guard your hearts and minds in Christ Jesus.

As we prepare for summer we are reminded that in our daily lives, whatever we are going through, God has been through it too, in Jesus Christ. We live as Christians with peace in our hearts, knowing that God gets it, and God gets us!

### Many Sites, Many Seasons, Many Experiences

Lutherans Outdoors in South Dakota operates 5 sites in the summer months and 3 of the sites are open year round! Many people throughout the fall and winter experienced and explored Christ's love in community and creation at our year round sites. Included are quotes from the "Courage to Teach" Retreat held at Outlaw Ranch, January 19-22:

"May God continue to bless you and your camp."  
"Your loving embrace was most welcoming - thank you!"

There are many great opportunities all year round for all ages! See you at camp!

## 2011-2012 Synod Officers

**PRESIDENT:** Vivian Westgard, PH:605-882-5633  
 E-mail:vivigard@midco.net 1340 22nd St. NE, Watertown, SD  
 1st year, 1st term (Prairie Coteau Advisor)

**VICE-PRESIDENT:** Erika Lehmann, PH:338-4737, E-mail: elehmann@sio.midco.net 1869 S. Sertoma Ave. Unit 101, Sioux Falls, SD 57106 2nd year, 1st term (Crossroads & Southeast advisor)

**SECRETARY:** Kathy Heffernan, PH:605-324-3638  
 E-mail:heffernan@venturecomm.net 35338 153rd St., Wecota, SD 57438 2nd year, 2nd term (Northern Plains advisor)

**TREASURER:** Darlene Bresson PH: 605-886-0785  
 E-mail:minnie@wat.midco.net 621 S. Lake Dr., Watertown, SD 57201 1st year, 2nd term (Prairie Coteau Adv.)

**MISSION ACTION:** Dee Sanderson, PH:605-228-2567  
 E-mail; deesand@aol.com 2305 Sanderson Dr., Aberdeen, SD 57401 1st year, 1st term (Northern Plains Adv.)

**MISSION GROWTH:** Ardith McFarland, PH:605-347-3153  
 E-mail:triplecreekbranch@msn.com 21546 Ricard Rd, Sturgis, SD 57785 1st year 2nd term (Bear Butte Advisor)

**MISSION COMMUNITY:** Mary Hildebrandt, PH:605-482-8516  
 PO Box 86, Ramona, SD 57054  
 1st year, 1st term (Medary Advisor)

**MEMBER AT LARGE:** Vicki Persson, Ph:732-4605, E-mail: Vicki@midstatesd.net 38896 268th St. Corsica, SD 57328  
 2nd year, 1st Term (Prairie Rivers Advisor)

**MEMBER AT LARGE:** Lucille Birkholtz, Ph:625-3765, E-mail: LMBirk@itctel.com 42341 193rd St., Willow Lake, SD 57278  
 2nd, 1st term (Medary Advisor)

**LITERACY CHAIRPERSON:** Sally Hillner PH:605-692-5590  
 E-mail:sallyh@brookings.net  
 505 Minnesota Dr., Brookings, SD 57006

**TODAYS'S DREAM TOMORROW'S REALITY:** Mardella Bieber  
 PH:605-685-6984 E-mail: [dmbieber@abe.midco.net](mailto:dmbieber@abe.midco.net) PO Box 266, Bowdle, SD 57428  
 Margene Thompson: E-mail:amthompson@santel.net  
 39141 240th St., Letcher SD 57359

**NEWSLETTER:** Lucille Birkholtz PH & FAX:605-625-3765  
 E-mail:LMBirk@itctel.com 42341 193rd St, Willow Lake, SD 57278

**Please remember, all addresses MUST be your mailing address, some of you have 2 addresses, a physical address (street or 911) but I have to have your mailing address to insure that your newsletter is delivered.**

**Seven days without prayer makes one weak.**

## Dates to remember:

### 2012-HAPPY ANNIVERSARY TO THE WOMEN OF THE ELCA

**Feb 23-26,** Conference of Synodical Pres. in Chicago

**Feb. 26** Bold Woman's Day

**Feb. 29** Joy Ranch Leap Day Launch

**April 14-28** Conference's Spring Conference days

**June 15-16,** 25th Synodical Convention at Lutheran Memorial Church in Pierre.

**July 27-28,** Synodical Leadership Workshop at New Home, Mitchell

### PASS IT ON!!

This SD Synodical Newsletter is published to inform Women of the ELCA of the SD Synodical happenings, activities and opportunities with the Synod. The newsletter is published four times a year: February, April, August and November.

Please share this newsletter with your congregational unit officers:

President \_\_\_\_\_ Vice President \_\_\_\_\_  
 Secretary \_\_\_\_\_ Treasurer \_\_\_\_\_  
 Mission Growth \_\_\_\_\_ Mission Action \_\_\_\_\_  
 Mission Community \_\_\_\_\_

Anyone can subscribe to this newsletter for \$5 per year. You will receive four issues. Due dates for article are Feb. 1, April 1, August 1, November 1.

Name \_\_\_\_\_

Mailing Address: \_\_\_\_\_

City, State & Zip \_\_\_\_\_

Make your check payable to SD Women of the ELCA and mail it with the above information to:

**Darlene Bresson, 621 S Lake Dr. Watertown, SD 57201**

Send Address changes to Lucille Birkholtz, 42341 193rd St., Willow Lake, SD 57278  
 PH: & Fax: 605-625-3765



## South Dakota Synodical

Lucille Birkholtz, Editor

42341 193rd St.

Willow Lake, SD 57278

### CHANGE SERVICE REQUESTED

#### **SALAD RECIPE FROM STATE CONVENTION IN WATERTOWN**

##### **Chicken Salad for 24+**

- 1 pkg. spiral pasta (1# box), cooked
  - 1 doz. Hard-boiled eggs
  - 1# frozen peas, thawed
  - 2 (no.303) cans pineapple tidbits, drained  
(saving 1/3 cup of the juice)
  - 3# cooked chicken, diced
  - 2 cans chopped pimento
  - 3 or 4 pkgs. Cashew nuts
  - 4 cups diced celery
  - 1 lg. onion, diced
- Cool and combine all of the above.

Combine and add to the other mixture:

¾ cup mayo

2 Tbsp. mustard

1 Tbsp. salt

2 Tbsp. sugar

¼ to 1/3 cup of the pineapple juice to thin

If you will not be serving immediately, wait to  
add the nuts

Thanks for all your work for our South Dakota WELCA  
organization. Trudy Evenstad